

## 一、和

备的本测，查的、当  
表，的。

## 二、专业围

表、  
、等。

## 三、和分值

表、  
表包、表、  
等，等，  
等参表

包、唱、。

300，不别：

#### 四、内容和

， 不超 3

五、 围

六、 例

1.

(1) 的唱



fa	sol	la	si
----	-----	----	----

(2) si 的

C	D	A	B
---	---	---	---

2. 长

的



--	--	--	--

3. 常

的 称



--	--	--	--

4. 程

(1)

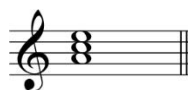
程的



--	--	--	--

(2)

的



--	--	--	--

(3) 的

Musical notation for exercise (3) showing five options (A, B, C, D) in treble clef with a key signature of one flat. Option A is a whole note chord (F4, A4, C5). Option B is a whole note chord (F4, A4, C5) with a yellow highlight on the C5 note. Option C is a whole note chord (F4, A4, C5) with a yellow highlight on the F4 note. Option D is a whole note chord (F4, A4, C5) with a yellow highlight on the F4 note.

(4) 的

Musical notation for exercise (4) showing five options (A, B, C, D) in treble clef with a key signature of one flat. Option A is a whole note chord (F4, A4, C5). Option B is a whole note chord (F4, A4, C5) with a yellow highlight on the C5 note. Option C is a whole note chord (F4, A4, C5) with a yellow highlight on the F4 note. Option D is a whole note chord (F4, A4, C5) with a yellow highlight on the F4 note.

Musical notation for exercise (4) with lyrics. The notation shows a whole note chord (F4, A4, C5) with a yellow highlight on the C5 note. Below the notation, the lyrics "5. 大的称" are written. The character "的" is positioned under the C5 note.

(1) 的 称

Musical notation for exercise (1) showing a whole note chord (F4, A4, C5) in treble clef with a key signature of one flat.

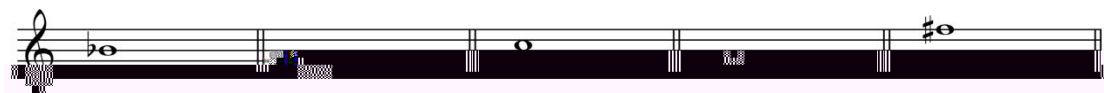
--	--	--	--

(2) 的 称

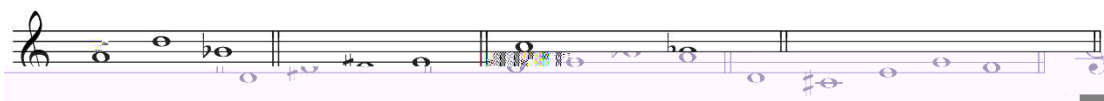
Musical notation for exercise (2) showing a whole note chord (F4, A4, C5) in treble clef with a key signature of one flat. The notes are partially obscured by a black redaction box.

--	--	--	--

1. 单



2. : ,



3. 程 程



4.



5.



## 6.单 部

Musical score for a single part, featuring a treble clef, a key signature of one flat, and a 6/8 time signature. The music consists of a single melodic line with various note values and rests. A dynamic marking *d* is present in a box below the first few notes.

**Moderato**

Musical score for two parts, featuring a treble clef, a key signature of one flat, and a 3/4 time signature. The tempo is marked **Moderato**. The top part starts with a dynamic marking *p* and the bottom part with *mp*. Both parts feature melodic lines with various note values and rests, including slurs and ties.